

Sound Level Meter class1 NL-52

Sound Level Meter class2 NL-42



Measure Sounds Reliably

Sound Level Meter
class1
NL-52

Sound Level Meter
class2
NL-42

**Free trial
optional programs**
now available on
our website



<http://rion-sv.com/>

Extremely user friendly ! Rion's NL-52 and NL-42 sound level meters provide full support for the measurement process.

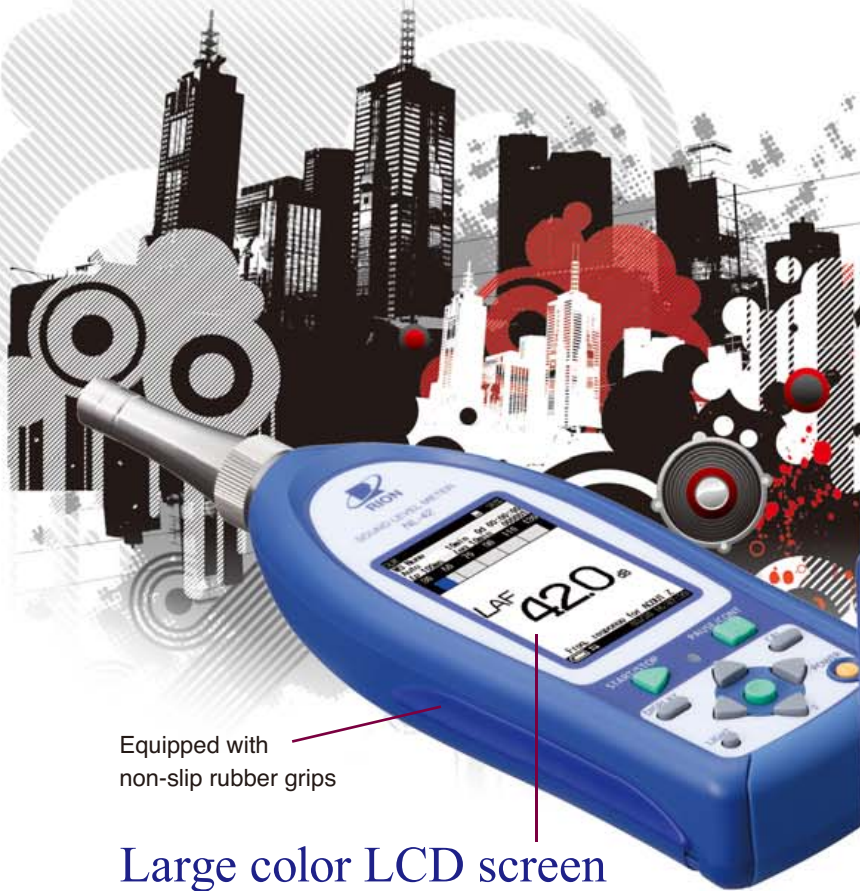
The NL-52 and NL-42 were developed to eliminate the trouble of reading instruction manuals when conducting measurements.

Large and easily viewable three-inch LCD color display.

The unit (except for the microphone) is water-resistant, which means that it is unaffected by sudden rain showers.

You can use rechargeable batteries to help cut down on waste, making this an environmentally friendly product.

250 mm
9.85 inch



Equipped with non-slip rubber grips

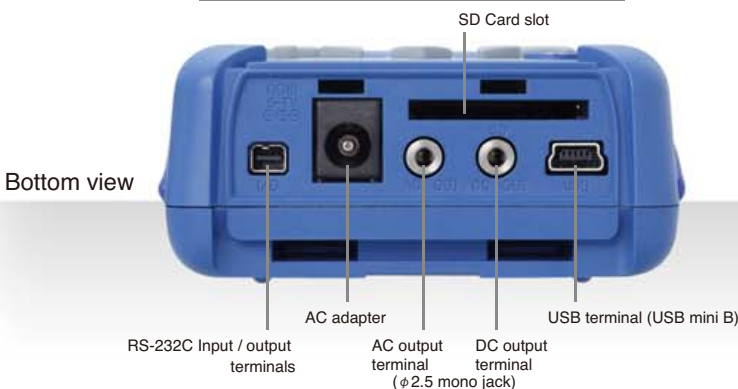
Large color LCD screen

Three-inch LCD screen with a touch panel
High resolution screen is easy to see indoors or outdoors and even in the dark.



(Full scale)

Variety of I/O Connections

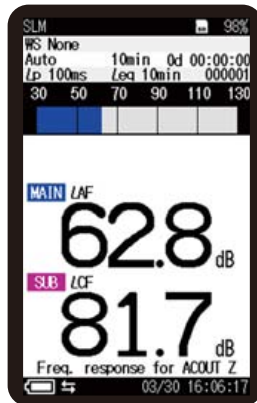


No paper manual is needed.

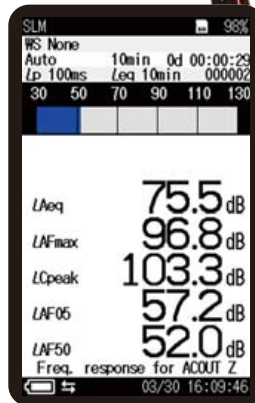
User instructions and a help function can be easily accessed on the device.



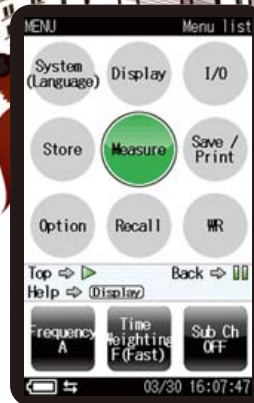
Measurement Display (Level-Time graph)



Measurement Display (Simultaneous display of Main and Sub channel)



Parameter Screen



Menu screen



Help screen

Water-resistant (Except for the microphone)

Guaranteed water-resistant to at least level IP54 (resistant to spraying water). Helps reduce failures caused by sudden rain showers.



* Mounting the All-weather windscreen or rainproof windscreen helps raise the water-resistant performance of the entire unit, so that the microphone will meet IPX3 specifications.

Use of rechargeable batteries

In these new models it is possible to use rechargeable batteries which make these meters environmentally-friendly. 24 hour continuous measurement is possible (when using eneloop® or dry alkaline batteries).



- Please use the dedicated charger to charged eneloop® batteries.
- When using eneloop batteries, please read the eneloop® battery instruction manual.
- eneloop® is a registered trademark of Panasonic group.

Continuous detailed measurements for one month

This meter can be used to conduct long-term measurements, such as environmental measurements. (If an AC adapter is used)

Duration of recording

NL-52/42

1000 h (approx. one month)

Previous model

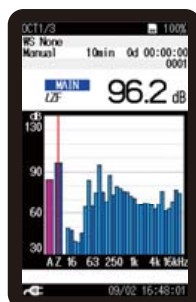
200 h (approx. one week)

Example of detailed recording

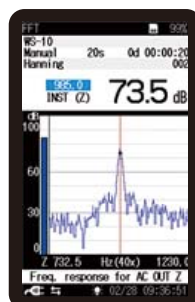
If the L_p is measured at 100 ms intervals and the L_{eq} is simultaneously measured at 10 min intervals over a 24 h period, the total size of accumulated data is approximately 74 MB (reference value)

Functionality can be extended by a range of options

Additional functions can be added, such as simultaneous logging of raw data (100 ms L_p) and processed data (L_{eq} and other indices), frequency analysis reverberation time measurement and long-term data recording.



1/3 octave band analysis screen



FFT analysis screen (x40)



Data management screen of AS-60 software

Optional program function list

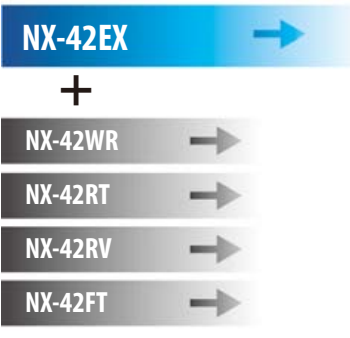
When the optional programs are installed, the following functions are added:

Extended function program NX-42EX

The NX-42EX is supplied on the 512 MB SD card. The 512 MB SD card can be used as a memory card after installing the program.

Prepares for other programs

When NX-42EX is installed*, NX-42WR, NX-42RT, NX-42RV and NX-42FT can be added.



NX-42EX
Auto store function (instantaneous value, processed value)
Comparator function
Continuous data output function



Program type	NX-42WR	NX-42RT	NX-42FT	NX-42RV
Additional function				
Real sound monitor (waveform recording)	●			
Octave, 1/3 octave band analysis		●		
Octave, 1/3 octave band filter output		●		
FFT analysis			●	
Reverberation Time Measurement				●

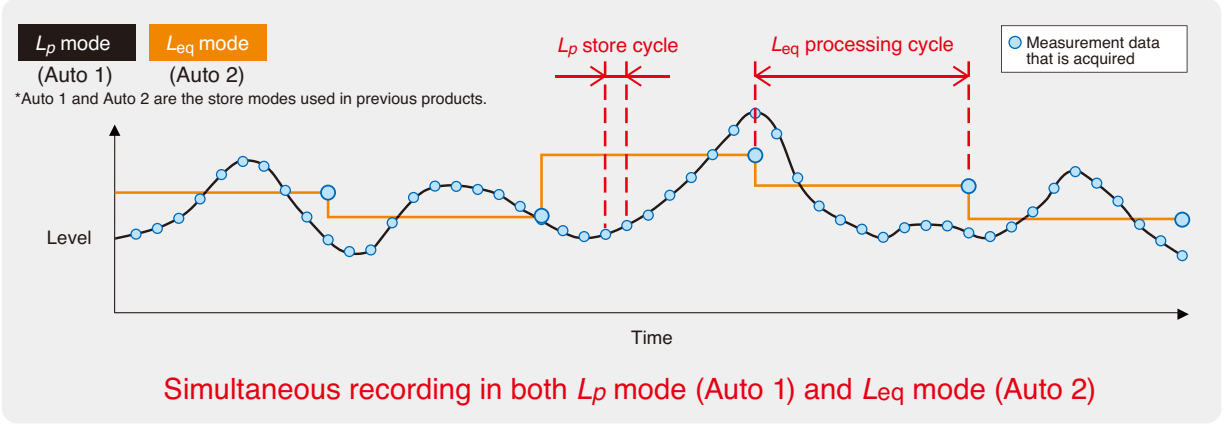
* The NX-42EX program cannot be uninstalled.

Auto store function

This function enables continuous measurement in L_p mode (instantaneous SPL) and L_{eq} mode (equivalent continuous SPL) to be conducted simultaneously.

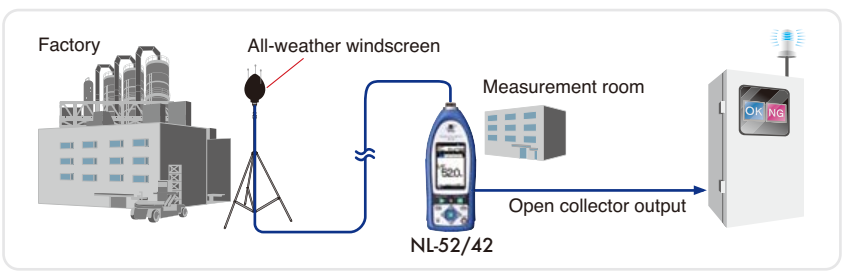
Total measuring time of Auto store function	Up to 1 000 h	Equipped with a timer function
---	---------------	--------------------------------

L_p mode (instantaneous SPL) and L_{eq} mode (equivalent continuous SPL) concept



Comparator function

This function turns on when the open collector output exceeds the set value (max. applied voltage 24 V, max. current 60 mA, allowable dissipation 300 mW).



Continuous data output function

This function enables the continuous acquisition of instantaneous values and processed values during both USB and RS-232C communication. This is a convenient function for users who can design their own control programs, where data has to be transferred continuously from the sound level meter to the computer.

Waveform recording program NX-42WR



The NX-42WR is supplied on the 2 GB SD card. The 2 GB SD card can be used as a memory card after installing the program.



This function enables users to record sounds and to process sound levels simultaneously. Recorded data can be played on computer and used for frequency analysis.

(Uncompressed waveform WAVE file)

Sampling at 48 kHz, 24 kHz, 12 kHz, Selection of 24 bit or 16 bit

Maximum recording time (16 bit)

Sampling frequency	Memory card	512 MB	2 GB	32 GB
48 kHz		1 h	4 h	79 h
24 kHz		2 h	9 h	158 h
12 kHz		4 h	18 h	315 h

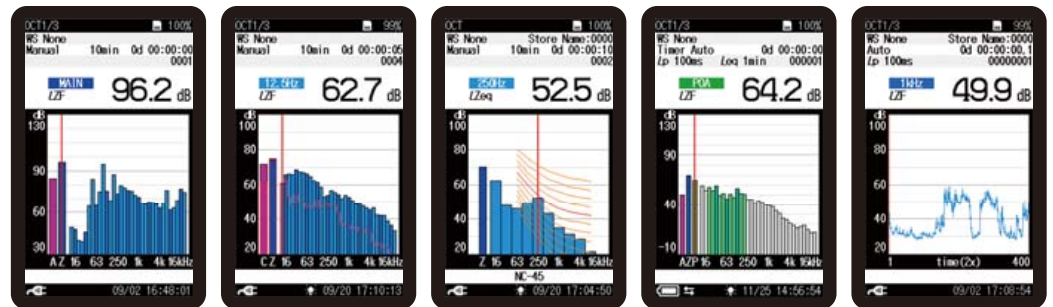
Octave, 1/3 octave real-time analysis program NX-42RT



The NX-42RT is supplied on the 512 MB SD card. The 512 MB SD card can be used as a memory card after installing the program.



By adding the NX-42RT program to the NL-52/NL-42, octave band and 1/3 octave band analysis can be performed. Saved analysis results can be loaded and shown in an overlay graph display together with current analysis data. NC curve graph display and NC value calculation/display are also possible. Using the AS-60RT software, data can be utilized and managed on a computer.



1/3 octave band analysis screen

Overlay analysis screen

NC curve screen

Partial over all screen

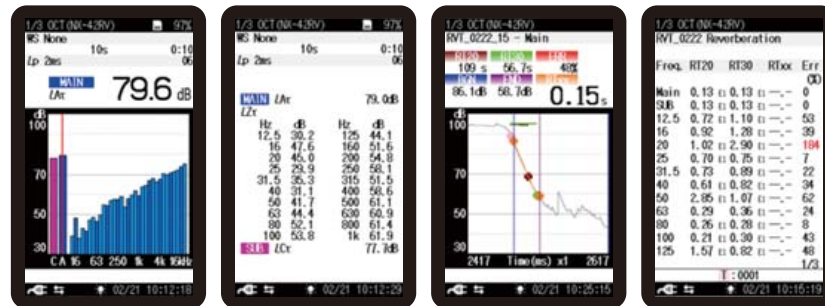
Measurement screen (Level-Time graph)

Reverberation Time Measurement Program NX-42RV



The NX-42RV is supplied on the 512 MB SD card. The 512 MB SD card can be used as a memory card after installing the program.

By adding the NX-42RV program to the NL-52/42, reverberation time measurements can be performed. The measurement method is the interrupted noise method. This program allows storage of reverberation time decay curves, T20/T30 calculation, Txx calculation (reverberation time calculation based on a user-defined interval) and averaged reverberation time results displayed on the SLM screen.



Measuring screen (graph)

Measuring screen (numeric)

Reverberation time decay curve screen

Result screen (T20/T30/Txx)

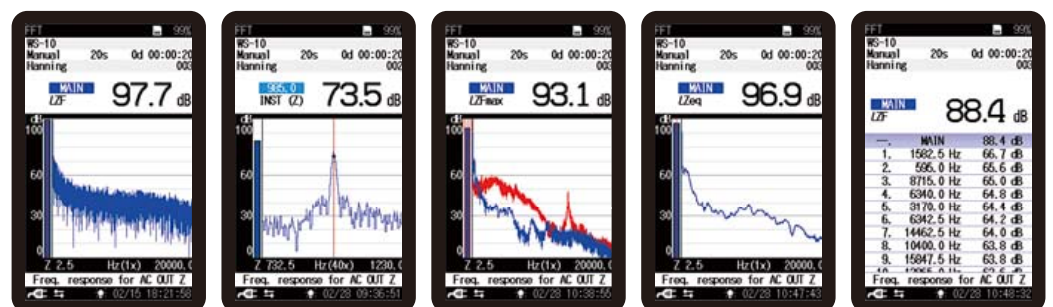
FFT analysis program NX-42FT



The NX-42FT is supplied on the 512 MB SD card. The 512 MB SD card can be used as a memory card after installing the program.



By adding the NX-42FT program to the NL-52/NL-42, FFT analysis can be performed. The analysis frequency range is 20 kHz, with 8 000 spectrum lines (200 displayed). Saved analysis results can be loaded and shown in an overlay graph display together with current analysis data. Maximum zoom ratio is x40, and the top list screen can show up to 20 lines.



Analysis screen (x1)

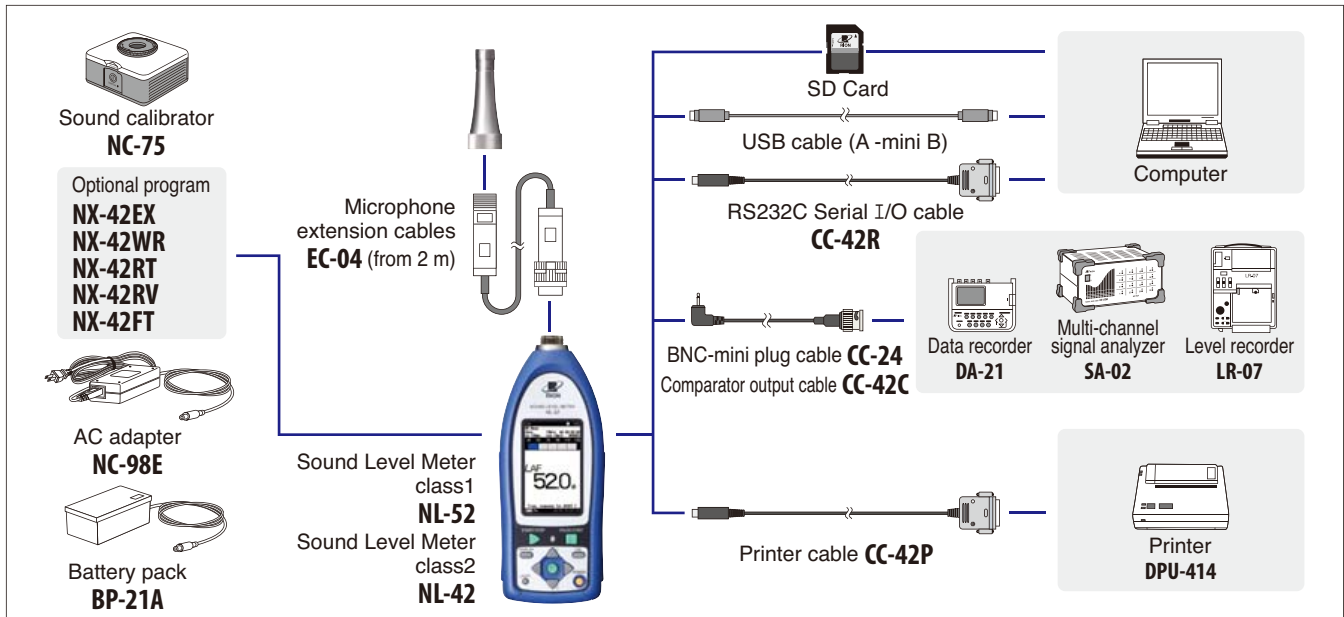
Analysis screen (x40)

Overlay analysis screen

Linear average screen

Top list screen

System construction



Peripheral devices

All-weather windscreen WS-15



This windscreen is designed for outdoor installations. It helps to reduce wind noise and is equipped with rainproof features that satisfy the **IPX3 water-resistant** specifications. It is used with a microphone extension cable.

(Mounting adapter WS15006 required separately)
(For All-weather windscreen WS-15, use of ST-81 is recommended.)

Rain-protection windscreen WS-16



This screen protects the microphone against rain for a short period of time. The rainproof performance of this windscreen is designed to satisfy the **IPX3 water-resistant** specifications.

Sound calibrator NC-75



This Sound calibrator conforms to IEC 60942 (JIS C 1515), class 1, providing a level of performance sufficient for calibrating the precision sound level meter.

Specifications

Nominal acoustic pressure level	94 dB
Nominal frequency	1 kHz

PISTONPHONE NC-72A



Compliant with JIS C 1515: 2004 (IEC 60942: 2017) class LS/C, class 1/C
Allows calibration with accuracy of ± 0.10 dB.

Specifications

Nominal acoustic pressure level	114 dB
Nominal frequency	250 Hz

Tripod ST-80



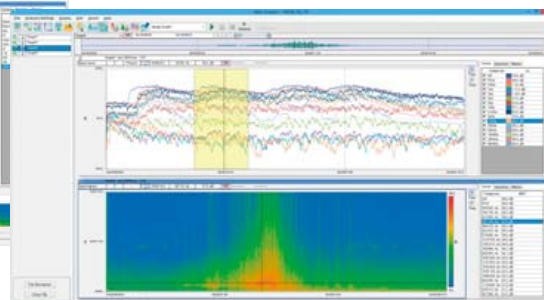
This stand can be used for general acoustic measurements. The sound level meter and microphone can be mounted on the stand.

Waveform analysis software AS-70

This software allows you to load stored WAVE files from a RION sound level meter, vibration meter or data recorder. Octave, 1/3 octave, and FFT analyses can then be performed. Playback of the real sound files is also possible.



Frequency analysis screen



Frequency analysis screen

Specifications

Waveform analysis	Calculations	Maximum value, Minimum value, Average value, RMS, Variance, Differential and integral calculus, HPF, LPF
Frequency weighting		Z, A, C, G, C to A, L_v (vertical) (JIS C 1510), L_h (horizontal) (JIS C 1510)
FFT analysis	Analysis points	32 to 65 536 points
	Display data	Power spectrum, Power spectral density, Spectrogram
Time weighting		10 ms, F, 630 ms, S, 10 s
Octave band analysis	Applicable standards	IEC 61260 Class 1 (JIS C 1514 Class 1)
	Analysis frequency	Octave band 0.5 Hz to 16 kHz (16 bands)
	range	1/3 octave band 0.4 Hz to 20 kHz (48 bands)

Recommended computer specifications

CPU	Intel Core™2 Duo 2 GHz or higher
RAM	2 GB or more (4 GB recommended)
HDD	20 GB free or more (100 GB or more recommended)
DISPLAY	XGA (1 024 × 768) or more
OS	Microsoft Windows 7 Professional 32 bit / 64 bit, 8.1 Pro 64 bit, 10 Pro 64 bit

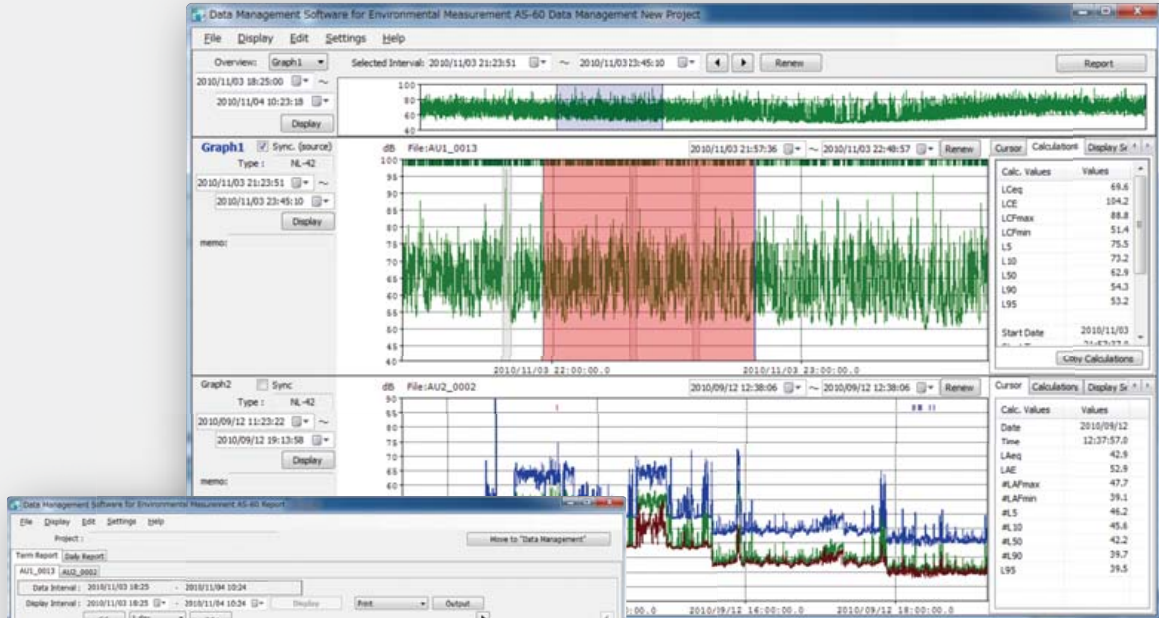
Complete software for environmental measurements



Data management software for environmental measurement AS-60

Data management software for environmental measurement AS-60 enables the graph display of measurement data, arithmetic processing, excluded sound processing, preparation of reports, output of files, and playback of real sound files.

- Easy to use
- Reports easy to prepare
- Simultaneous display of multiple data items (up to 8 data items)
- Data stored in a data recorder can be loaded (CSV file for DA-40 Viewer)
- Data combination



Data management screen
Report preparation screen

Supported models

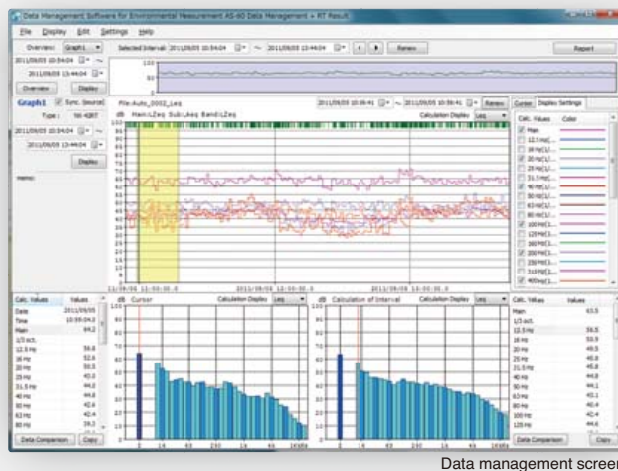
- NL-62*
 - NL-52/42*
 - NL-32/31/22/21*
 - DA-40Viewer
- *Only auto store data are supported.

Recommended computer specifications (Common for AS-60/60RT/60VM)

CPU	Intel Core™2 Duo 2.0 GHz or higher
RAM	2 GB or more
DISPLAY	XGA (1024 x 768) or more, at least 65 536 colors
OS	Microsoft Windows 7 Professional 32 bit and 64 bit, 8.1 Pro 64 bit, 10 Pro 64 bit

● If AS-60/60RT/60VM is used for NL-52/42 data, the NX-42EX is also needed.

Data management software for environmental measurement AS-60RT (Includes the octave and 1/3 octave data management software)



Data management screen

Adds support for handling octave band analysis data to AS-60

AS-60RT is for managing NX-62RT/42RT or NA-28 data on a computer.

Supported models

- SX-A1RT*
 - NX-62RT*
 - NX-42RT*
 - NA-28*
- *Only auto store data are supported.

Data management software for environmental measurement AS-60VM (Includes the vibration level data management software)

Adds support for handling data measured with VM-55EX/53A to AS-60

Supported models

- VM-55EX*
 - VM-53A*
- *Only auto store data are supported.

Specifications



		NL-52	NL-42
Applicable standards		IEC 61672-1: 2013/2002 class 1 ANSI/ASA S1.4-2014/Part1 class 1 JIS C 1509-1: 2017 class 1	IEC 61672-1: 2013/2002 class 2 ANSI/ASA S1.4-2014/Part2 class 2 JIS C 1509-1: 2017 class 2
Measurement functions		CE marking WEEE Directives, Chinese RoHS (export model for China only)	
Processing (main ch)		Simultaneous measurement of the following items, with selected time weighting and frequency weighting Instantaneous sound pressure level: L_p Equivalent continuous sound pressure level: L_{eq} Sound exposure level: L_E Maximum sound pressure level: L_{max} Minimum sound pressure level: L_{min} Percentile sound levels: L_N (0.1 to 99.9 %, 0.1-increment steps, max. 5 values)	
	Additional processing	Instantaneous sound pressure level: L_p In addition to main processing items, one of the following can be selected for simultaneous processing: C-weighted equivalent continuous sound level: L_{Ceq} C-weighted peak sound level: L_{Cpeak} Z-weighted peak sound level: L_{Zpeak} I-time-weighted equivalent continuous sound level: L_{A1eq}^{*2} Maximum I-time-weighted equivalent continuous sound level: L_{A1max}^{*2} The power average of the maximum level of each 5 second interval: L_{A1ms} The frequency weighting for the additional processing synchronizes with the frequency weighting of the sub-channel, so when the sub-channel has A-weighting, L_{A1ms} can be selected. When C-weighting (Z-weighting) is selected, the additional processing L_{Ceq} and L_{Cpeak} (L_{Zpeak}) are selectable.	
Microphone	Type	UC-59	UC-52
	Sensitivity level	-27 dB	-33 dB
Measurement range	A-weighting	25 dB to 138 dB	19 dB or less
	C-weighting	33 dB to 138 dB	27 dB or less
	Z-weighting	38 dB to 138 dB	32 dB or less
	C-weighting peak sound level	55 dB to 141 dB	
	Z-weighting peak sound level	60 dB to 141 dB	
Inherent noise	A-weighting	17 dB or less	19 dB or less
	C-weighting	25 dB or less	27 dB or less
	Z-weighting	30 dB or less	32 dB or less
Frequency range		10 Hz to 20 kHz	20 Hz to 8 kHz
Frequency weighting		A, C, and Z	
Time weighting		F (Fast) and S (Slow)	
Level range		Single range (Linearity range: 113 dB)	
Bar graph display range max		Max. 110 dB (20 to 130 dB)	
	Switching of bar graph display	Set the upper/lower limit in 10 dB increments.	
RMS detection circuit		Digital processing method	
Sampling cycle		20.8 μ s (L_p , L_{eq} , L_E , L_{max} , L_{min} , L_{peak} : sampling frequency: 48 kHz) 100 ms (L_N)	
Calibration		Electrical calibration performed according to IEC and JIS standards, using internally generated signals: acoustic calibration performed with the NC-75.	
Correction functions		Windscreen correction: Compliant with IEC 61672-1 and JIS C 1509-1 standards when the windscreen is installed.	
		Diffuse sound field correction: Correction of frequency characteristics in order to comply with standards (ANSI S1.4) in diffuse sound field.	
Delay time		The meter can be set to start measuring a specified time (OFF, 1, 3, 5 or 10 s) after the start button has been pressed or when a user-set trigger is exceeded.	
Back erase function		When the PAUSE key is pressed to pause measurement, the preceding (user selectable) 0, 1, 3 or 5 s data are excluded from processing.	
Display		Backlit semitransparent color TFT LCD display WQVGA (400 x 240 dots) * LCD with touch panel (Capacitive Touch Panel)	
		Numerical display update frequency: 1 s Bar graph update frequency: 100 ms	
Store	Manual	Data for measurement results are stored manually in single address increments.	
	Number of data	Internal memory: max. 1 000 sets SD Card: depends on the capacity of the SD Card*1	
	Auto*2	Instantaneous values (L_p mode) and processed values (L_{eq} mode) are stored continuously and automatically at preset intervals.	
	L_p sampling cycle	100 ms, 200 ms, 1 s, L_{eq} 1s	
L_{eq} sampling cycle	10 s, 1, 5, 10, 15, 30 min, 1, 8, 24 h, and user selected time (up to 24 hours)		
Measurement Time	Max. 1 000 h in Auto L_p storage mode, max. 100 000 addresses in Auto L_{eq} storage mode(depends on the capacity of the SD card)*1		
Data recall		Allows viewing of stored data	

Setup memory	Up to five setup configurations can be saved in internal memory, for later recall Start up via file settings previously stored on SD card possible		
Waveform recording*3	File format	Uncompressed waveform WAVE file	
	Sampling frequency	Select 48 kHz, 24 kHz or 12 kHz	
	Data length	Select 24 bit or 16 bit	
	Outputs	Output DC signals using a frequency weighting characteristic selected by processing.	
AC output	Output voltage	2.5 V, 25 mV / dB at bar graph display full scale	
	Output voltage	1 V (rms values) at bar graph display full scale	
	Comparator output*2	Turns on when the open-collector output exceeds the set value (max. applied voltage 24 V, max. current 60 mA, allowable dissipation 300 mW).	
USB		Allows USB to be connected to a computer and recognized as a removable disk	
		Allows USB to be controlled via communication commands	
RS-232C communication	Allows for RS-232C communication via use of a dedicated cable		
Data continuous output*2	Type of data	Instantaneous value L_p Processed value L_{eq} , L_{max} , L_{min} , L_{peak}	
	Output interval	100 ms	
	Print out	Printing of measurement results on dedicated printer DPU-414	
Power requirements	Battery life (23 °C)	Four IEC R6 (size AA) batteries (alkaline or rechargeable batteries) or external power supply Alkaline battery LR6 (AA): 26 h NI-MH secondary battery: 25 h At the maximum *Depends on the setting	
	AC adapter	NC-98E	
	External power voltage	5 to 7 V (rated voltage: 6 V)	
	Current consumption	Approximately 90 mA (normal operation, rated voltage)	
Ambient conditions	Temperature	-10 to +50 °C	
	Humidity	10 to 90 % RH (non-condensing)	
Dustproof / water-resistant performance*4	IP code: IP54 (except for microphone) See precautions regarding waterproofing		
Dimensions, weight	Approx. 250 (H) x 76 (W) x 33 mm(D), approx. 400 g (with batteries)		
Supplied accessories	Storage case x 1, Windscreen WS-10 x 1, Windscreen fall prevention rubber x 1, Hand strap x 1, LR6 (AA) alkaline batteries x 4, SD card 512 MBx1 (NX-42EX preinstalled model only)		

Options

Product name	Product number
Extended function program (Inst.on 512 MB SD card)	NX-42EX
Waveform recording program*2 (Inst.on 2 GB SD card)	NX-42WR
Octave, 1/3 octave real-time analysis program*2 (Inst.on 512 MB SD card)	NX-42RT
Reverberation time measurement program*2 (Inst.on 512 MB SD card)	NX-42RV
FFT analysis program*2 (Inst.on 512 MB SD card)	NX-42FT
Data management software for environmental measurement	AS-60
Data management software for environmental measurement (Includes the octave and 1/3 octave data management software)	AS-60RT
Data management software for environmental measurement (Includes the vibration level data management software)	AS-60VM
Waveform analysis software	AS-70
SD Card 512 MB	MC-51SD1
SD Card 2 GB	MC-20SD2
SD Card 32 GB	MC-32SP3
AC adapter (100 V to 240 V)	NC-98E
Battery pack	BP-21A
Microphone extension cables	EC-04 (from 2 m)
BNC-Pin output code	CC-24
Comparator output cable	CC-42C
Printer	DPU-414
Printer cable	CC-42P
RS 232C serial I/O cable	CC-42R
USB cable	Generic USB cable can be used
Sound calibrator	NC-75
All-weather windscreen	WS-15
Windscreen mounting adapter	WS-15006
Rain-protection windscreen	WS-16
Sound level meter tripod	ST-80
All-weather windscreen tripod	ST-81

*1 Use Rion fully guaranteed products. *2 NX-42EX required (sold separately). *3 NX-42WR required (sold separately).
*4 Protection against harmful dust and water splashing from any direction.

Precautions regarding waterproofing

Before use, verify that the rubber bottom cover and the battery compartment lid are firmly closed.
To maintain the water and dust proof rating, internal packing replacement is required every two years (at cost).



JCSS
JCSS 0197

RION Co., Ltd. is recognized by the JCSS which uses ISO/IEC 17025 (JIS Q 17025) as an accreditation standard and bases its accreditation scheme on ISO/IEC 17011. JCSS is operated by the accreditation body (IA Japan) which is a signatory to the Asia Pacific Laboratory Accreditation Cooperation (APLAC) as well as the International Laboratory Accreditation Cooperation (ILAC). The Quality Assurance Section of RION Co., Ltd. is an international MRA compliant JCSS operator with the accreditation number JCSS 0197.



ISO 14001 RION CO., LTD.
ISO 9001 RION CO., LTD.

* Windows is a trademark of Microsoft Corporation. * Specifications subject to change without notice.

Distributed by:

RION CO., LTD.
<https://rion-sv.com/>

3-20-41, Higashimotomachi, Kokubunji, Tokyo 185-8533, Japan
Tel: +81-42-359-7888 Fax: +81-42-359-7442

This product is environment-friendly. It does not include toxic chemicals on our policy.
This product is certified to an International Protection rating of IP54 (dust protected and resistant to splashing water).
This leaflet is printed with environmentally friendly UV ink.